

Company Profile

Since its establishment, SonoScape has been committed to providing high quality medical equipment for the healthcare sector. SonoScape specializes in the development and production of diagnostic ultrasound solutions. By introducing advanced imaging techniques, SonoScape has improved diagnostic accuracy and therefore enabled better health outcomes. Since 2002, SonoScape has reached and benefited millions of people. With the world in mind, SonoScape will continue providing more effective and accessible healthcare solutions, through persistent innovation and passion for life.

Quote from the Analyst of

"The Frost & Sullivan Award for Growth Leadership is presented to the company that has demonstrated excellence in capturing the highest annual compound growth rate for the last 3 years...The sales of ultrasound devices contribute an overwhelming proportion of total revenue, helping the company strengthen its leading position to outperform the competitors in the marketplace. With increasing penetration of mid-to high-end ultrasound devices, SonoScape is expected to see significant growth potential in the future..."

Company Milestone

- 2002: Company Founded in Shenzhen, China
- 2003: Released SSI-1000: the 1st 15" Portable Color Doppler system in China
- 2004: Released SSI-2000: the 1st PC platform Color Doppler system in China
- 2005: Received the "High Technology Company" award from the PRC government
- 2007: Received "CHINA TOP BRAND" award in the Medical Equipment Industry
- 2007: Released the 1st Real time 4D ultrasound system in China
- 2008: Received "European Entrepreneurial Company 2008" award from FROST & SULLIVAN
- 2008: Received "Flagship Company" award in the Medical Equipment Industry in China
- 2009: Received "Product Quality Leadership Award 2009" from FROST & SULLIVAN
- 2011: Received the Reddot 2011 Product Design Award for S20 in Essen, Germany
- 2013: Received "Ultrasound Market Growth Leadership Award, 2013" from FROST & SULLIVAN
- 2014: Received the iF Product Design Award 2014 for S9 in Munich, Germany
- 2014: Received "Company of the Year in Ultrasound Market, 2014" from FROST & SULLIVAN



ISO 13485

CE 0197

SonoScape

Yizhe Building, Yuquan Road, Shenzhen, 518051, China
Tel: 86-755-26722890 Fax: 86-755-26722850
E-mail:sonoscape@sonoscape.net www.sonoscape.com

SonoScape

S6

The Best Value in
Portable Ultrasound

U-S620150316

Caring for Life through Innovation

The Best Value Portable Ultrasound



S6 is a multifunction hand carried Color Doppler ultrasound system that can be widely used in clinical practice. SonoScape has developed this system to satisfy the most clinical requirements as Radiology, Cardiology, OB/GYN, Vascular and Small parts. With the help of powerful software packages, professional transducers, built-in battery and other user-friendly designs, S6 makes it possible for doctors to serve patients anywhere and anytime without compromise.



Premium Features

- 15 inch LCD monitor
- CFM, DPI, PW, HPRF, CW
- One button image optimization: M-tuning
- Tissue Harmonic Imaging, Compound Imaging
- Trapezoidal Imaging and standard Freehand 3D Imaging
- Intuitive interface and user-friendly control panel
- Lightweight, built-in Li-ion battery supports continuous scanning for more than one hour without power supply

Abundant Communication Interfaces



- 2 universal sockets for quick switch during scanning
- Optional socket extender, S6 connects with 3 transducers at the same time
- 2 USB 2.0 ports and DICOM 3.0 port
- S-video and VGA ports
- USB based software upgrade



Hepatic Vein



Power Doppler



Kidney



Thyroid Tumor



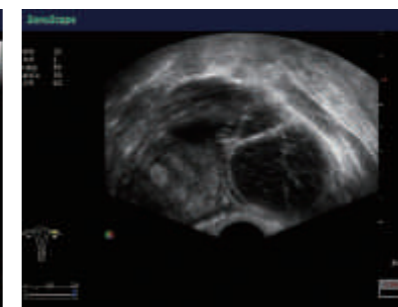
Breast Carcinomam



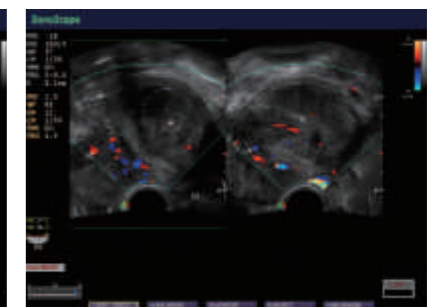
Hydrocele Testis



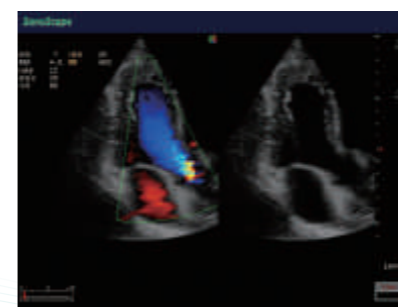
Fetal AO Arch



Uterus Cyst



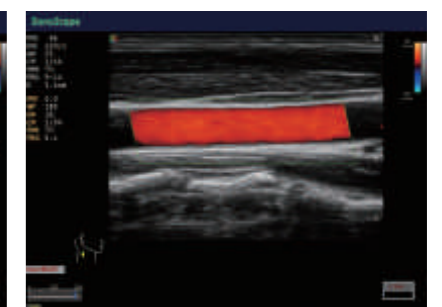
Hysterosmyoma



LVOT Flow



MV Flow



Common Carotid Artery

Application

Radiology:

- Shared services: 2B, 4B, CFM, DPI and PW, Panoramic imaging
- Wide range of transducer: high density linear and convex, L-shape surgical probe
- Image quality: supreme 2D, and penetration high Doppler sensitivity, 32.9 cm high penetration

OB/GYN:

- Freehand 3D imaging; Optional 4D imaging
- 200 degrees wide range trans-vaginal transducer with temperature-detection
- Professional and abundant OB/GYN measurement software

Cardiovascular:

- Shared services: color M, CFM, PW, CW, Stear M-mode, TDI
- Wide range of transducer: high frequency linear, high and low frequency phased array and micro-convex array
- Professional and abundant cardiovascular measurement software

Urology:

- Trans-rectal transducers: EC 9-5
- Biplane transducers: BCC9-5 and BCL10-5
- Professional urological measurement software

Emerging Application:

- Support Emergency, ICU/CCU, Anesthesia applications
- Trapezoidal imaging technology and Panoramic imaging
- Hockey transducer
- High frequency linear transducer, up to 15MHZ
- Friendly ergonomic designs and ease of use
- Built-in Li-ion battery
- Biopsy guide

Other Application:

- MSK/Sports medicine, Breast, Angiology and Vascular, etc.

A Wide Range of Clinical Applications

